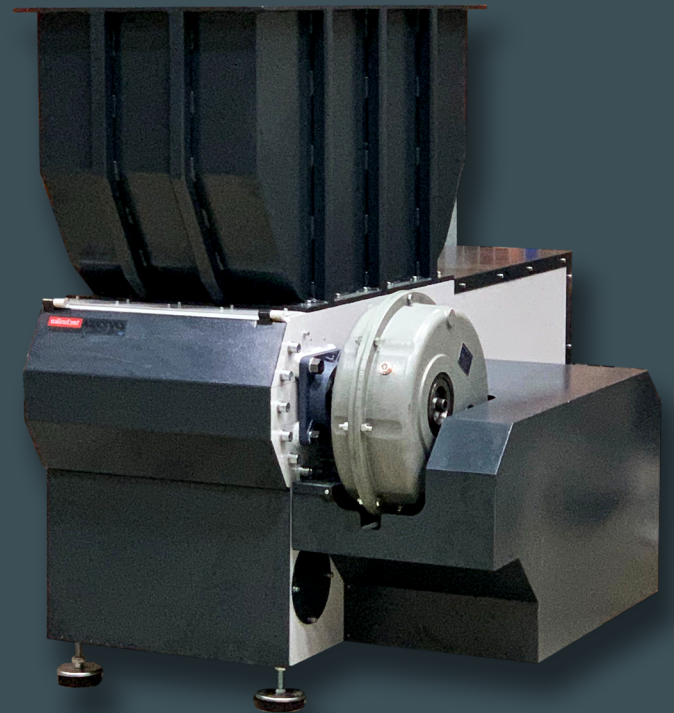
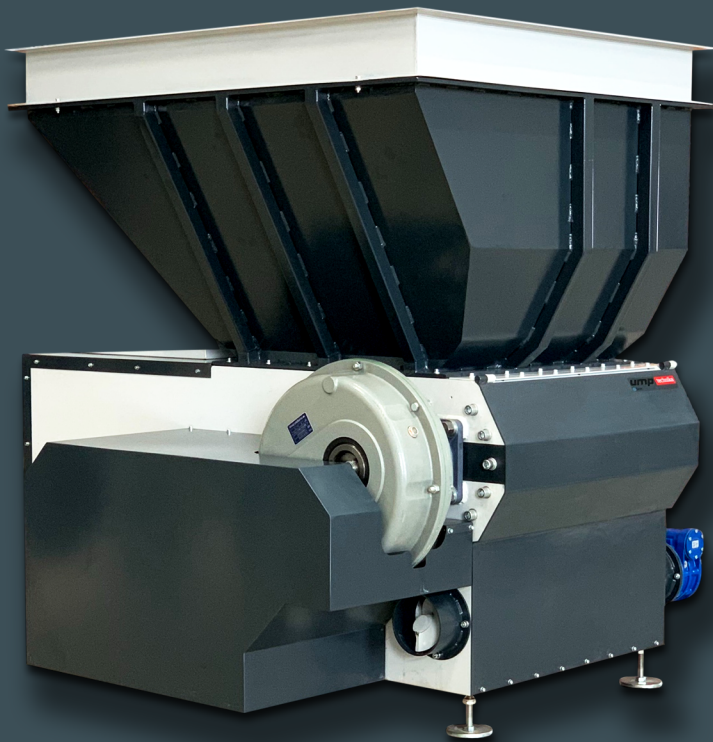




UMP
bac

technika

ump

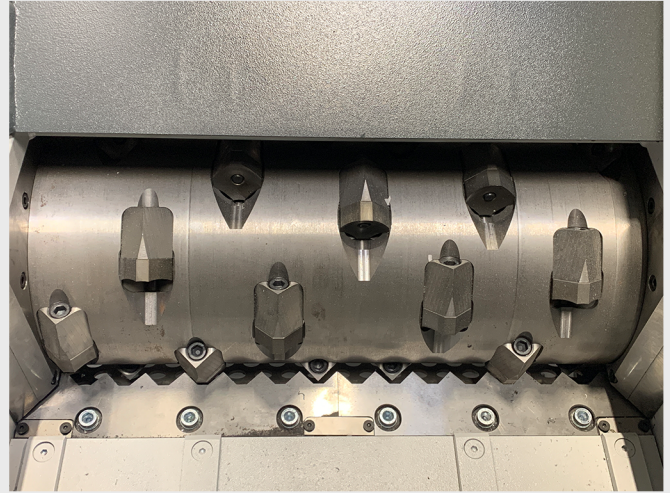


»» SINGLE SHAFT SHREDDERS
VVS-800 | VVS-600

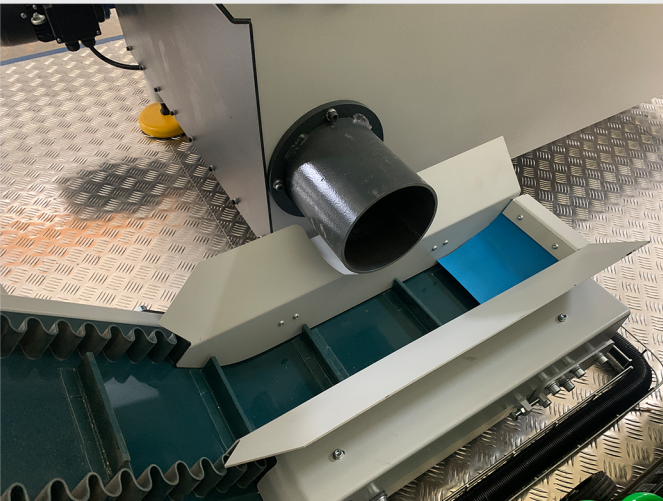
»»» ABOUT THE TECHNOLOGY



Versatile Solution: Single rotor shredders excel in shredding a wide range of materials including wood, rubber, plastic, paper, light metals, and general waste, even medical waste. Their adaptability suits woodworking companies seeking efficient waste management.



Cost-Effective: Despite offering features comparable to pricier units, single shaft shredders maintain an affordable price point. This accessibility allows businesses, including smaller woodworking operations, to enhance waste management without overspending.



Waste Reduction: Implementing single rotor shredders enables companies to convert waste into briquetteable mass, reducing volume and easing storage, transportation, and potential resale. This maximizes raw material utilization and minimizes waste, improving sustainability.



Customizable and Adaptive: These shredders easily adapt to different production needs and materials. Whether adjusting shredding mechanisms or integrating features, customization ensures optimal efficiency and productivity while remaining cost-effective.

Nature  **Business**

Eco-Friendly Solution & Wallet-Wise Choice

TECHNICAL HIGHLIGHTS

Basic information

The VVS family of Single-Shaft Shredders offers a versatile solution for efficiently processing various materials, including wood, rubber, plastic, paper, metals, and general waste, including medical waste. Designed for woodworking companies, these shredders transform waste into briquetteable mass, enhancing storage, transport, and resale possibilities.

The shredder is primed and ready for action, requiring only a power source to unleash its full potential. With its versatile capabilities and robust design, this machine stands poised to tackle a wide array of materials, from wood and plastics to metals and general waste.

Ambient operating temperature range of the vehicle spans 5 – 40°C. Machine should be installed indoors, protected from the elements (rain, sleet, snow).

Each shredder is designed, built and tested in Ukmergė, Lithuania by UMP Technika. Not only do we manufacture, but we also use our machines - all products of UMP Technika are also used daily in three sister woodworking companies (sawmill & furniture component producer).

VVS Single-Shaft Shredders are operating in Ukmergė which allows for constant testing and improvements of the machines.

Hydraulics

Horizontal Hydraulic Ram is assisting the rotor by pushing material, maximizing the working area efficiency of the shredder. By ensuring efficient material feeding, it enhances overall shredding productivity.

The hydraulic ram is meticulously controlled by an algorithm, prioritizing both safety and efficiency. This intelligent control system optimizes the ram's movements, preventing potential hazards and maximizing operational effectiveness.

The hydraulics are mounted on gimbals, providing exceptional stability and durability. This design choice contributes to a longer service life, minimizing maintenance requirements and ensuring consistent performance over time.

The hydraulic components are housed within an enclosed system, reducing noise and vibrations during operation. Additionally, the ladder frame chassis further enhances stability and safety, creating a robust foundation for the shredder.

Electricals

Shredder operates on a standard 380-volt electrical supply at a frequency of 50 Hz. The main motor has a power rating of 18.5 kW, providing the necessary torque and speed for efficient shredding operations. The revolutions per minute (RPM) of the shredder's rotor are set at 98, ensuring optimal performance during material processing.

Power supply: 380 V, 50 Hz

Main motor power: VVS-600 18.5 kW, VVS-800 22 kW

Revolutions: 98 RPM

Material infeed

The VVS-800 has a larger work area and hopper size compared to the VVS-600. VVS-800 can accommodate larger pieces of material or allow for a higher volume of material to be processed at once, making it suitable for applications with higher throughput requirements or larger input sizes. VVS-600 is a solution for smaller throughput requirements. For comparison:

Work Area: VVS-600 600x505 mm, VVS-800 800x505 mm

Hopper Size: VVS-600 564x1164 mm, VVS-800 764x1164 mm

TECHNICAL HIGHLIGHTS

Both the VVS-600 and VVS-800 shredders are versatile machines capable of shredding a wide range of materials. Here are the materials they can shred:

Wood Types:

- Briquettes
- Hardwood
- Softwood
- Lumber

Other Substances:

- Rubbers
- Plastics
- Paper
- Light metals

Manufacturer's warranty

24 month / 1000 work hour warranty ¹

Service intervals:

Service, materials and parts provided by the seller.
Servicing done following the manual & service plan.

Additional options

- Cutting blades adapted to specialised material
- Specialised rotors for larger pieces of material
- Screw unloading conveyor
- Pneumatic unloading conveyor
- Custom-shaped bunker hopper
- Installation and training
- Extended hopper

SPECIFICATIONS:	VVS-800	VVS-600
THROUGHPUT ² :	Up to 5m ³ /h, ~700kg/h	Up to 3.5m ³ /h, ~500kg/h
HOPPER:	0.7m ³	0.53m ³
MAIN MOTOR:	22.5kW	18.5kW
HYDRAULICS:	1.1kW	
BLADES:	38 units	28 units
BLADE SIZE:	35x35mm	
WIDTH:	1500mm	1300mm
LENGTH:	2100mm	
WEIGHT:	1700kg	1500kg
HEIGHT:	1600mm	
SCREEN:	D8~D40	
OUTPUT HOLE:	D200	
WARRANTY:	2 years / 1000 workhours	

¹ Which ever comes first, either 24 months or 2000 work hours.

² Depends on sieve size, material size & material type. Accurate numbers provided after tests with clients material.

»» **TOGETHER.**
EVERY STEP OF THE WAY ««



technika

UAB "UMP TECHNIKA" | BRIQUETTE.LT

Deltuvos str. 22, LT – 20122 Ukmerge, Lithuania | sales@umpt.lt